



tcs[®]



the beautiful, comfortable choice
for Removable Partial



tcs[®] Unbreakable Product Catalog



tcs[®] Unbreakable p. 3

Injection Equipment p. 4-6

Injection Accessories p. 7

Waxes p. 8

Processing p. 9

Finishing p. 10-12

Polishing p. 13

Duplicating Machines p. 14

Pressure Pots p. 15

Miscellaneous Accessories
p. 16

tcs[®] Unbreakable Partial
Maintenance p. 17

Marketing Tools p. 17

tcs® Unbreakable

the beautiful, comfortable choice

Thermoplastic Comfort System was founded in 2000 by Marilyn Posca and Alex Posca. Marilyn and Alex come from a long line of dental professionals and innovators. With over 10 dental enterprises in the family ranging from Dental Offices to dental product & equipment manufacturers and designers, tcs® understands precisely the needs of Dentist, Labs and most importantly, Patients.

tcs®, Inc.'s innovative products ensure excellence in light-weight and comfortable appliances that combine strength and flexibility with superior esthetic qualities.

When you choose tcs®, you are taking advantage of the exceptional quality of tcs®, Inc.'s products. You also benefit from the profound knowledge of its staff as well as their unrivaled commitment to providing superior service and support; the kind of knowledge and dedication that can only come from a company founded and operated by people for whom inventing, manufacturing and supplying dental products is not just a business, but a family tradition for three generations.



Quickly becoming the thermoplastic of choice for laboratories, dentist and patients worldwide. tcs® Unbreakable is an extremely resilient high-performance material used for the fabrication of removable partial dentures. It offers the ideal degree of flexibility, uncompromising aesthetics and guaranteed unbreakability. tcs® Unbreakable is available in a variety of shades, sizes and diameters. 25 mm diameter is used with the tcs® processing equipment. tcs® Unbreakable is also available in 22 mm & 28 mm for use with a variety of thermoplastic injection equipment. Additionally, tcs® Unbreakable is sold by bulk with cartridges sold separately.



*Each cartridge includes a delivery bag and Dr./Patient Pamphlet.

SHADE / SIZE (5 Pack)	DIAMETER			
	25mm	28mm	22mm	25mm w/nozzle
LIGHT PINK Shade 1				
SMALL	4002-01/S1	--	--	--
MEDIUM	4000-01/M1	4000-01/MF1	--	--
LARGE	4005-01/L1	4005-01/LF1	4005-01/L22-1	4005-01/LT25-1
STANDARD PINK Shade 2				
SMALL	4002-01/S2	--	--	--
MEDIUM	4000-01/M2	4000-01/MF2	--	--
LARGE	4005-01/L2	4005-01/LF2	4005-01/L22-2	4005-01/LT25-2
LIGHT-DARK PINK Shade 3				
SMALL	4002-01/S3	--	--	--
MEDIUM	4000-01/M3	4000-01/MF3	--	--
LARGE	4005-01/L3	4005-01/LF3	4005-01/L22-3	4005-01/LT25-3
DARK PINK Shade 4				
SMALL	4002-01/S4	--	--	--
MEDIUM	4000-01/M4	4000-01/MF4	--	--
LARGE	4005-01/L4	4005-01/LF4	4005-01/L22-4	4005-01/LT25-4
NATURAL Shade N				
SMALL	4002-01/SN	--	--	--
MEDIUM	4000-01/MN	4000-01/MFN	--	--
LARGE	4005-01/LN	4005-01/LFN	4005-01/L22-N	4005-01/LT25-N



EMPTY CARTRIGES AND CAPS				
SIZE (5 Pack)	DIAMETER			
	25mm	28mm	22mm	25mm w/nozzle
SMALL	3000-01S	--	--	--
MEDIUM	3000-01M	3000-01MF	--	--
LARGE	3000-01L	3000-01LF	--	--

Available by Bulk*	
SHADE	1 KILO
LIGHT PINK Shade 1	4003-01B/1
STANDARD PINK Shade 2	4003-01B/2
LIGHT-DARK PINK Shade 3	4003-01B/3
DARK PINK Shade 4	4003-01B/4
NATURAL Shade N	4003-01BN

* each kilo includes 52 bags & certificates.

Injection Equipment

Automatic Air Injector w/ built-in Furnace

Equal pressure with every injection for consistent and accurate results. The tcs® Automatic Injector with Built-in Furnace is used to melt tcs® Unbreakable Nylon and inject it into the flask. The furnace is built-in to the injector eliminating the need to move the hot Cylinder with Handle and Molten Resin from the Furnace to the Injector. One of the many benefits of this injector includes a design that is intended for easy cleaning and maintenance of the unit, because it is inevitable that some thermoplastic residue will be released into the receptacle at some point throughout the use of the injector. It has 4 screws located on the plaque at the top of the machine, the screws are simply unscrewed to remove the cylinder, then the cylinder can be easily cleaned of residue. Additionally, this unit has a self purging system, eliminating the need for hammering out cylinders.

Features

- Inject with a touch of a button
- Built-in furnace
- Self-purging system
- Easy clean up and maintenance of unit
- Compact table top design

Specifications

Yield: Approximately 30 cases per day
Weight: 40 lbs. / 18 kilos
Dimensions: Width 8" / Height 23" / Depth 13.5"
Available in 110v and 220v

Injection Unit Only (item # 3525-01 ea.)

Kit Available

Automatic Air Injector w/ built-in Furnace (complete System)

Kit Includes:

- 1 tcs® Automatic Air Injector w/ built-in Furnace
- 6 tcs® Unbreakable Standard Pink Med (5 pack)
- 2 Injection Flasks
- 1 Hot Air Welder
- 1 tcs® Knife
- 1 Mold Release Spray
- 1 oz tcs® Fusing Liquid
- 1 oz tcs® Cement
- 1 Rubberized Abrasive 304
- 1 Rubberized Abrasive 306
- 1 Rag Buff
- 1 Box tcs® Denture Cleaner
- 10 Pink Stone Wheels
- 10 Rubber Wheels
- 5 Large Rubber Point
- 5 Small Rubber Point
- 1 oz E-Z Flow
- 1/3 bar Blue High Shine
- 1/3 bar Green High Shine
- 1/3 bar White/Pink High Shine
- 1/4 bar Brown Tripoli
- 10 pieces Pallet Wax
- 10 pieces Sprue Wax
- 10 pieces Lingual Bar Wax
- Variety of promotional items

(item # 3526-01 Kit)



A.



B.



A. tcs® Automatic Injector/ Hydraulic

The tcs® Hydraulic Injector is used to inject molten nylon into the injection flask. This unit is a heavy-duty industrial injector, ideal for high production laboratories, allowing injections every 4 minutes. The injector is used in conjunction with the tcs® Digital Furnace (Item # 3512-01) or similar type furnace. With one furnace the injector yields approximately 30 cases per day, but with additional furnaces and Melting Cylinders, it can yield up to 120 cases per day. Some of the many benefits of this unit includes the ease of injection (just a touch of a switch), consistent pressure for accurate results, and the ability to incorporate additional furnaces to increase production.

*Kit available.

Injection Unit Only (item # 3504-01 ea.)

Kit (item # 3501-01 Kit)

B. tcs® Manual Injector System

The tcs® Manual Injector is used to inject molten nylon into the injection flask. This injector is the most economical of the tcs® Injection units. The principal benefit of having a manual injector is the easy maintenance, and longevity of the unit. The injector is used in conjunction with the tcs® Digital Furnace (Item # 3512-01) or similar type furnace. With one furnace the injector yields approximately 30 cases per day, but with additional furnaces and Melting Cylinders, it can yield up to 120 cases per day. 25 year warranty on parts and labor.

*Kit available.

Injection Unit Only (item # 3506-01 ea.)

Kit (item # 3505-01 Kit)

***Kits Include:** for A and B

- 1 tcs® **Automatic Injector Hydraulic or Manual Injector**
- 1 tcs® Digital Furnace
- 6 packs of 5 tcs® Unbreakable Standard Pink Medium
- 2 Melting Cylinder with Handle
- 2 Injection Flasks
- 1 Bronze Disk thin
- 2 Bronze Disks thick
- 1 Knock Out Kit
- 1 Hot Air Welder
- 1 tcs® Knife
- 1 Mold Release
- 1 tcs® Fusing Liquid
- 1 tcs® Cement
- 1 Rubberized Abrasive 304 and 306
- Rag Buff
- tcs® Denture Cleaner
- 10 Pink Stone Wheels
- 10 Rubber Wheels
- 5 Large Rubber Points
- 5 Small Rubber Point
- 1 oz. E-Z Flow
- 1/3 bar Blue High Shine
- 1/3 bar Green High Shine
- 1/3 bar White/Pink High Shine
- 1/4 bar Brown Tripoli
- 10 Pallet Wax
- 10 Sprue Wax
- 10 Lingual Bar Wax
- Variety of promotional items

Furnace & Furnace Accessories

A. Digital Furnace

Designed to be simple and practical. This small digital furnace is used to melt thermoplastic nylons. The Melting Cylinder w/Handle (Item # 3703-01) and Bronze Disks (Item #'s 3709-01 or 3712-01) are used in conjunction with the furnace.

(item # 3512-01 ea.)

B. Cylinder with Handle

The tcs® Melting Cylinder with Handle is fabricated from high precision stainless steel to withstand warpage under extreme heat and is ground finished smoothly to eliminate sticking of residue material.

(item # 3703-01 ea.)

C. Knock-Out Stand

The Knock Out Stand is a steel cylinder used for purging the Melting Cylinder (Item # 3512-01) of the remaining tcs® Unbreakable Cartridge and the Bronze Disk after injection.

(item # 3705-01 ea.)

D. Knock-Out Rod

The Knock-Out Rod is a steel rod used in conjunction with the Knock-Out Stand to facilitate purging of the Melting Cylinder (Item # 3512-01) of the remaining tcs® Unbreakable Cartridge and the Bronze Disk after injection.

(item # 3707-01 ea.)

E. Bronze Plug Thin

Thin Bronze Disk is used when melting Large tcs® Unbreakable Cartridges in the Furnace.

(item # 3709-01 ea.)

F. Bronze Plug Thick

A Thick Bronze Disk is used when melting Medium or Small tcs® Unbreakable Cartridges in the Furnace.

(item # 3712-01 ea.)

A.



B.



C.



D.



F.

E.

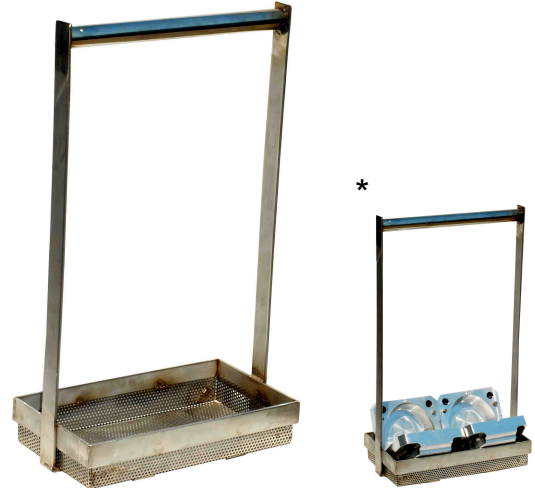




Injection Flask

The tcs® Aluminum Flask is used for the injection of tcs® Unbreakable. The flask is milled from one piece of aluminum block, its extra smooth finish facilitates the de-flasking process.

(item # 3701-01 ea.)



Boil-out Strainer

Convenient Tool for Boil Out! This strainer is used during Boil-Out to soak flasks in boiling water. It is fabricated to last, made out of stainless steel with an extra long handle for easy use. This strainer won't break like most other strainers do. Additionally, it catches the teeth in case they come off during Boil-Out, no more hunting for teeth in Boil-Out Unit.

(item # 3609-01 1ea.)

**The strainer fits 2 flasks (4 flask halves). (Flasks not included)*

Palatal Wax

Save time waxing with these pre-formed palates created with the recommended thickness of a tcs® Unbreakable Palate.

(item # 5015-01 80 box)



Lingual Bar Wax

Pre-formed lingual connector bars. Ideal for clasps, flange and lingual connector areas.

(item # 5020-01 1 lb)



Sprue Wax

Easy to work with, does not get brittle. Ideal diameter for sprueing tcs® Unbreakable.

(item # 5025-01 1 lb)



Processing



tcs® Cement

The tcs® Cement is used to secure teeth in the stone prior to injection. The tcs® Cement is mild enough to prevent the bonding of the stone to the teeth after injection.

(item # 3801-01 1 oz)



tcs® Fusing Liquid

The tcs® Fusing Liquid is used for repairs and additions to existing tcs® Unbreakable Partial. The Fusing Liquid is ONLY used when flasking and injection are necessary.

(item # 3812-01 1 oz)



Mold Release Spray

Colorless and non-staining multi-purpose food grade lubricating spray.

(item # 3814-01 16 oz)

Twist Drills

Twist Drills are used to create the diatoric retention in acrylic teeth that are necessary for fabricating a tcs® Unbreakable Partial.

Twist Drills 005 (item # 5005-01 6 pack)

Twist Drills 006 (item # 5006-01 6 pack)

Twist Drills 009 (item # 5009-01 6 pack)

Twist Drills 012 (item # 5012-01 6 pack)



tcs® E-Z Flow

Easy-to-apply separator for processing thermoplastics. The tcs® E-Z flow allows the partials to come out shiny and clean, free of stone stuck to the partial. The finishing time of a thermoplastic is significantly reduced. This separator is for use with thermoplastics ONLY.

(item # 4217-01 16 oz)



Hot Air Welder

The Hot Air Welder is used for minor repairs or additions to a tcs® Unbreakable Partial.

(item # 3714-01 ea.)

Finishing



Econo Cutter Mandrel

Special mandrel required of the 4" diameter Econo Cutter (Item # 4203-01).

(item # 4204-01 ea.)



Econo Cutter X-Lrg

The 4" Diameter Econo Cutter is used to cut off the sprues from the tcs® Unbreakable after it has been injected.

(item # 4203-01 ea.)



tcs® Carving Knife

This knife is excellent for removing extended fibers that sometimes appear during processing of tcs® Unbreakable. It is also used to define the neck lines of the tcs® Unbreakable when necessary.

(item # 4201-01 ea.)



Knife Blades

Replacement Blades for Item # 4201-01

(item # 4202-01 12 pack)



Pink Grinding Wheels

The Pink Grinding Wheel is an excellent and economical product for the finishing stage of tcs® Unbreakable.

(item # 4205-01 100 box)



Knock Down Wheel Chuck

Mandrel used with the White Knock-Down Wheel (Item # 4211-01) and the Brown Rubber Wheels 304F and 306F (Item # 4304-01 and 4306-01)

(item # 4212-01 ea.)



White Knock Down Wheel 3 x 3/8

This Knock-Down Wheel was developed for trimming base plates, acrylic, and stone models, but it also works ideally on tcs® Unbreakable as one of the first steps in finishing. Use to cut the excess bulk and trim to the desired length.

(item # 4211-01 ea.)

Green Mounted Stone

Green Mounted Points are used during the finishing stage of a tcs® Unbreakable. They cut thermoplastics moderately, and leave a smooth surface. Also ideal for chair-side adjustments.

(item # 4501-01 100 box)



Rubber Wheels #723

The Small Brown Rubber Wheels are used as the last step prior to polishing a tcs® Unbreakable Partial.

(item # 4503-01 100 box)



Rubber Wheel

Long-lasting wheel for smoothing tcs® Unbreakable Partials during the finishing stage.

Rubber Wheel 304-F (item # 4304-01 ea.)

Rubber Wheel 306-F (item # 4306-01 ea.)

Rubber Point

These Rubber Points are ideal for making minor chair-side adjustments.

Rubber Point Lrg (item # 4510-01L ea.)

Rubber Point Sml (item # 4511-01S ea.)





Finishing Kit

The tcs® Finishing Kit includes all the essential items recommended for the finishing stage of a tcs® Partial. Items are also sold individually.

Kit Includes:

- 1 Cut Off Disk
- 1 Mandrel for Cut Off Disk
- 1 Knock Down Wheel
- 1 Chuck for Knock Down Wheel
- 1 Knife w / Blade
- 1 306F Abrasive
- 1 304F Abrasive
- Pink Wheels 100/Box
- Brown Rubber Wheels 100/Box
- 1 Carbide Bur (Item # 50252G-01)

(item # 4214-01 kit)



Doctor Adjustment Kit

This kit includes the essential tools needed for all types of chair-side adjustments for tcs® Unbreakable Partial Dentures.

Kit Includes:

- 2 shapes of Carbide Burs (Item # 50C79-01 and 50C25-01)
- 2 Green Mounted Stones
- 2 Large Brown Rubber point
- 2 Small Brown Rubber point
- 1 box of tcs® Concentrated Denture Cleaner

(item # 4014-01 kit)

Carbide Bur

Specifically designed to cut through thermoplastics, these burs are long-lasting with high cutting efficiency.



(item # 50251G-01 ea.)



(item # 50C25-01 ea.)



(item # 50C79-01 ea.)



(item # 50G79-01 ea.)

Polishing

Polishing Bars:

Designed for high shine of tcs® Unbreakable.



Brown Tripoli

(item # 4206-01 2 lbs)



Green High Shine

(item # 4209-01 5 oz)



White/Pink High Shine

(item # 4210-01 5 oz)



4"x 40 Leather Center Loose Muslin Buffs for High Shine

High quality and long lasting rag buff stitched only in the center for the extra softness needed for polishing tcs® Unbreakable. The rag buff is used with pumice or pumice substitute and dry for the high shine process.

(item # 4207-01 ea.)



High Shine Polishing Paste

Designed as the final step in the polishing process for tcs® Unbreakable, usually used for 3 to 5 minutes with the dry soft Rag Buff (Item # 4207-01) at low speed.

(item # 4215-01 6.7 oz)



Polycril

Polycril is an advanced formula for high-speed polishing of acrylics and thermoplastics.

(item # 4298-01 1 lb)



Polishing Kit

The tcs® Polishing Kit includes all the essential items recommended for the polishing stage of a tcs® Unbreakable Partial. Items are also sold individually.

Kit Includes:

- 1 lb of Polycril
- 1 B-27 Brush
- 1 Green High Shine
- 1 White/Pink Shine
- 1 Blue High Shine
- 4 Rag Buffs
- Also included is a CD demonstrating Finishing, Polishing and Hot Air Repair Techniques.

(item # 4290-02 kit)



Duplicating Machines

A. Duplicating Machine/2 gallon

(item # 3602-01 ea.)

B. Duplicating Machine/ 3 gallon

(item # 3603-01 ea.)

C. Duplicating Machine/3 gallon with Chopper

(item # 3605-01 ea.)

D. Duplicating Machine/10 gallon with Chopper

(item # 3604-01 ea.)

One of the only double boiler tanks in the market, and THE ONLY DOUBLE BOILER THAT USES ANTI-FREEZE instead of circulating water. This engineering eliminates the need to connect the machine to a water source and to drain water periodically. The anti-freeze never needs to be changed, simply check the level of anti-freeze every few months and maintain at specific level.

The machine pays for itself by doubling the life of your hydrocolloid material. The double boiler does not allow the material to burn, a significant saving for your laboratory.

The double boiler spares the hydrocolloid paste from sticking to the sides of the tank. This means that the mixer turns periodically instead of constantly (like other duplicating machines), saving on electricity and needless use of mechanical parts.

A.
B.



C.
D.



* Includes chopper

Pressure Pots



Pressure Pot – 6 quart

Durable aluminum construction holds up to 4 tcs® Pour Flasks.
Features air valve and pressure gauge.

(item # 3652-01 ea.)



Pressure Pot / 8 quart w/ Heater Only

Industrial Pressure Pot, built to last. Features a built in heater and adjustment thermostat. Available in 110v and 220v. Fits 6 tcs® Pour Flasks.

(item # 3610-01 ea.)



Pressure Pot / 8 quart w/ Air Reg. and Heater

Industrial Pressure Pot, built to last. Features a built in heater, adjustment thermostat and air regulator. Available in 110v and 220v. Fits 6 tcs® Pour Flasks.

(item # 3608-01 ea.)



Pressure Pot 8 quart with Thermometer and Air Valve Control

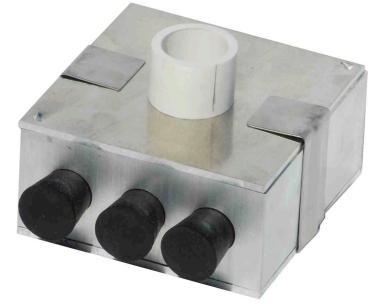
Industrial Pressure Pot, featuring a built-in heater, adjustable thermostat, thermometer for accurate reading of temperature.

(item # 3655-01 ea.)

* Replacement Gasket for 8 Quart Pressure Pot

(item # 3608G-01 ea.)

Miscellaneous Accessories



2 in 1 Flask - Duplicating/Investment Flask

Save time, money and space. New aluminum flask can be used for duplicates or investment models by simply flipping over the base. The innovative design allows the flask to only be filled according to the size of model, which is an excellent saving on paste. Unique open top design also prevents funneling of paste and time is saved because flask can be put in the water immediately. Additionally, after the mold is taken out of the flask for the case to be removed from the paste, the mold does not have to be put back into the flask, this is due to the new round design that helps the paste hold its integrity, a major benefits that additionally helps prevent distortion.

(item # 3653-01 ea.)

Pour Flask

The Pour Flasks are used for acrylic pour technique and to duplicate models. They are manufactured in light weight aluminum. Easy to assemble, disassemble and clean.

(item # 3650-01 ea.)



Model Holder

Model holder designed for surveying cases. Easy to place model and tilt into necessary position. Used for any surveying, block out, and attachment work. Made out of solid aluminum.

(item # 3657-01 ea.)

Nightguard Pour Flask

The Nightguard Pour Flask is used for the fabrication of tcs® Nightguards and to duplicate models. They are manufactured in light-weight aluminum. Easy to assemble, disassemble and clean.

(item # 3651-01 ea.)

Clasp Controller

This is a convenient tool used for adjusting metal clasps without the use of pliers, designed for the ultimate control of torque.

(item # 3656-01 ea.)

Maintenance



tcs® Concentrated Denture Cleaner

Highly recommended cleaner for the maintenance of tcs® Unbreakable. It safely removes coffee, tea, tobacco, fruit and iron stains, tartar, plaque, calcium and calculus. Used daily, it will keep appliances looking and feeling like new.

**Over-the-Counter cleaners are not recommended for thermoplastic restorations.*

(item # 4505-01 10 box)



Sonic Cleaner

Patients can get professional results at home. The tcs® Sonic Cleaner used in combination with the tcs® Concentrated Denture Cleaner (Item # 4505-01) helps remove tartar, plaque, stains, bacteria and food particles with the aid of high energy cycle waves (sonic vibrations) of 5800 waves per minute. Safe to use to clean dentures, partials, retainers and nightguards. *2 AA batteries included.

(item # 4013-01 ea.)

Marketing Tools

Grow your Thermoplastic Department Designed to help laboratories promote their TCS Department *All items are free of charge

Statement Stuffer

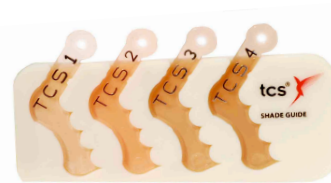


(Item # A073109)

8.5 x 11 Flyer



(Item # A082008)



tcs® Unbreakable Shade Guide
Designed to assist Dentist in choosing the best shade for the patient.

(Item # 8015-01)



Patient Education Brochure
This is an informative brochure meant for patients to learn more about tcs® Unbreakable Partial.

(Item # 8010-A1)

Lab Slips
These lab slips are designed for laboratories to distribute to their Doctors for use when prescribing tcs® Unbreakable Partial.

(Item # A082009)

tcs® Workshops for Technicians



We offer a variety of hands-on workshops year round. The workshops are given in small groups for optimal one-on-one time with the trainer. The purpose of the workshops is to equip technicians with the ability, as well as background knowledge to offer Dentists and their Patients a supreme tcs® product. Techniques will be covered to enable technicians with time saving tips and step-by-step processes to properly fabricate tcs® products.

Our workshops range from beginner to advanced technicians, from specific procedures, such as finishing and polishing, to complete start to finish workshops.

Workshops are held at our TCS Training Facility in Signal Hill, CA.

For detailed information on workshops and upcoming Training Classes visit us at www.tcsdentalinc.com or call (866) 426-2970.

Technical Questions Hotline
562-755-7239



Distributed by:

tcs[®]



TCS, Inc.
2619 Lime Ave.
Signal Hill, CA 90755

Toll Free: (866) 426-2970
Phone: (562) 426-2970
Technical Hotline: (562) 755-7239
Fax: (562) 426-5154
Email: info@tcsdentalinc.com
Website: www.tcsdentalinc.com